

Uni-Dicht-P/MF

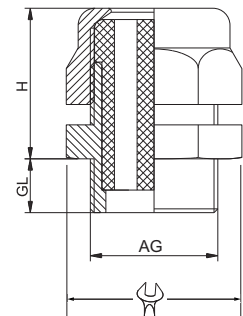
Material: PC /* POM
Farbe: grau (RAL 7035)
Dichteinsatz: TPE
Einsatztemperatur: -20°C bis 100°C
Schutzart: IP 68

Material: PC (nylon) /* POM
Colour: grey (RAL 7035)
Sealing insert: TPE
Temperature range: -20°C to 100°C
Protection type: IP 68

181.40



Gewinde Entry Thread AG	 mm	H mm	GL mm	 mm	HUGRO No.	 mm	HUGRO No.
M 16 x 1,5	19	22	9	2 x 1,2	181.17122.40	4 x 1,4	181.17144.40
M 16 x 1,5	19	22	9	2 x 3	181.17302.40	3 x 3	181.17303.40
M 16 x 1,5	19	22	9	4 x 3	181.17304.40	2 x 4	181.17402.40
M 20 x 1,5	22	23	9			4 x 1,5	181.20154.40
M 20 x 1,5	22	23	9	7 x 1,5	181.20157.40	9 x 1,5	181.20159.40
M 20 x 1,5	22	23	9	6 x 2	181.20206.40	2 x 2,3	181.20232.40
M 20 x 1,5	22	23	9	6 x 2,5	181.20256.40	2 x 3	181.20302.40
M 20 x 1,5	22	23	9	3 x 3	181.20303.40	5 x 3,5	181.20355.40
M 20 x 1,5	22	23	9	2 x 4	181.20402.40	3 x 4	181.20403.40
M 20 x 1,5	22	23	9	2 x 5	181.20502.40	2 x 6	181.20602.40
M 20 x 1,5	24	23	9	8 x 1,5	181.23158.40	3 x 2	181.23203.40
M 20 x 1,5	24	23	9	10 x 2	181.23210.40	2 x 3	181.23302.40
M 20 x 1,5	24	23	9	3 x 3	181.23303.40	4 x 3	181.23304.40
M 20 x 1,5	24	23	9	6 x 3,5	181.23356.40	3 x 4	181.23403.40
M 20 x 1,5	24	23	9	2 x 5	181.23502.40	2 x 6	181.23602.40
M 25 x 1,5	30/27	23	9	7 x 2	181.25207.40	3 x 3	181.25303.40
M 25 x 1,5	30/27	23	9	9 x 3	181.25309.40	2 x 4	181.25402.40
M 25 x 1,5	30/27	23	9	4 x 4	181.25404.40	6 x 4	181.25406.40
M 25 x 1,5	30/27	23	9	2 x 6	181.25602.40	4 x 6	181.25604.40
M 25 x 1,5	30/27	23	9	3 x 7	181.25703.40	2 x 8	181.25802.40
M 32 x 1,5	36/33	27	11	21 x 2	181.32221.40	8 x 3	181.32308.40
M 32 x 1,5	36/33	27	11	6 x 4	181.32406.40	8 x 4	181.32408.40
M 32 x 1,5	36/33	27	11	2 x 4,5	181.32452.40	4 x 5	181.32504.40
M 32 x 1,5	36/33	27	11	6 x 5	181.32506.40	8 x 5	181.32508.40
M 32 x 1,5	36/33	27	11	4 x 6	181.32604.40	4 x 6,5	181.32654.40
M 32 x 1,5	36/33	27	11	6 x 6,5	181.32656.40	3 x 7	181.32703.40
M 32 x 1,5	36/33	27	11	2 x 8	181.32802.40	4 x 8	181.32804.40
M 32 x 1,5	36/33	27	11	2 x 9	181.32902.40	3 x 9	181.32903.40
M 40 x 1,5	46/43	34	11,5	12 x 5,3	181.40512.40	6 x 6	181.40606.40
M 40 x 1,5	46/43	34	11,5	10 x 6	181.40610.40	7 x 7	181.40707.40
M 40 x 1,5	46/43	34	11,5	5 x 8	181.40805.40	6 x 8	181.40806.40
M 40 x 1,5	46/43	34	11,5	4 x 9	181.40904.40	5 x 9	181.40905.40
M 40 x 1,5	46/43	34	11,5	4 x 10	181.40104.40	5 x 10	181.40105.40
M 40 x 1,5	46/43	34	11,5	2 x 11	181.40112.40	3 x 11	181.40113.40
M 40 x 1,5	46/43	34	11,5	2 x 13	181.40132.40		
M 50 x 1,5	55/53	34	14	15 x 5	181.50515.40	13 x 7	181.50713.40
M 50 x 1,5	55/53	34	14	8 x 8	181.50808.40	11 x 8	181.50811.40
M 50 x 1,5	55/53	34	14	7 x 9	181.50907.40	8 x 9	181.50908.40
M 50 x 1,5	55/53	34	14	3 x 10	181.50103.40	4 x 11,5	181.50114.40
M 50 x 1,5	55/53	34	14	5 x 11,5	181.50115.40	4 x 13	181.50134.40
M 50 x 1,5	55/53	34	14	2 x 15	181.50152.40		
M 63 x 1,5 *	68/65	41	14	8 x 10	181.63108.40	4 x 12	181.63124.40
M 63 x 1,5 *	68/65	41	14	8 x 12	181.63128.40	4 x 16	181.63164.40
M 63 x 1,5 *	68/65	41	14	3 x 18	181.63183.40		



Auf Anfrage:

- weitere Ausführungen mit unterschiedlichen Bohrungen
- Bolzen zum Verschließen nicht gebrauchter Bohrungen siehe Zubehör - Serie 683

On request:

- further versions with different holes
- Plugs for closing of not used holes see accessories - series 683